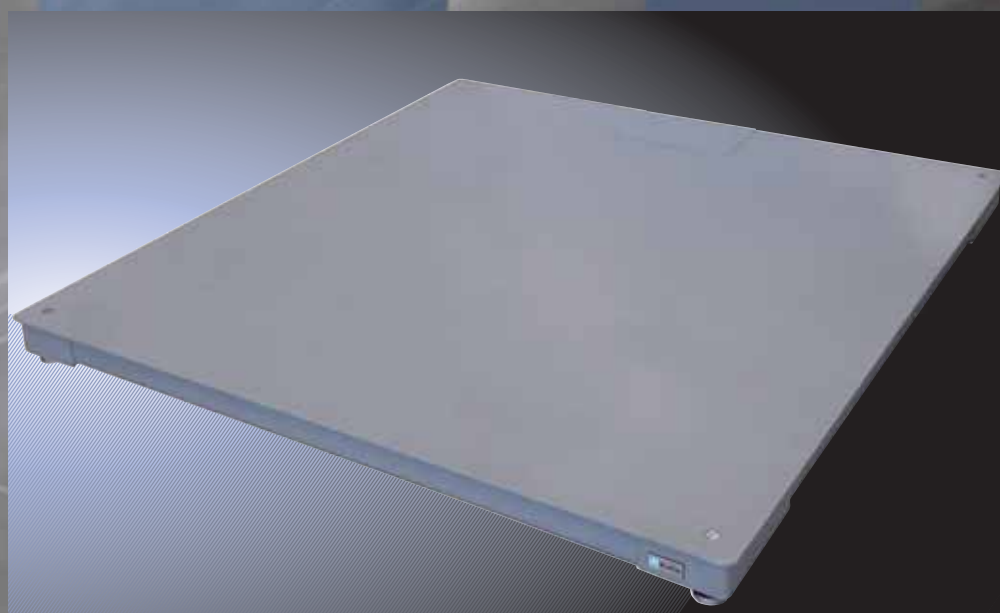


Heavy duty weighing platform



model PRM-L



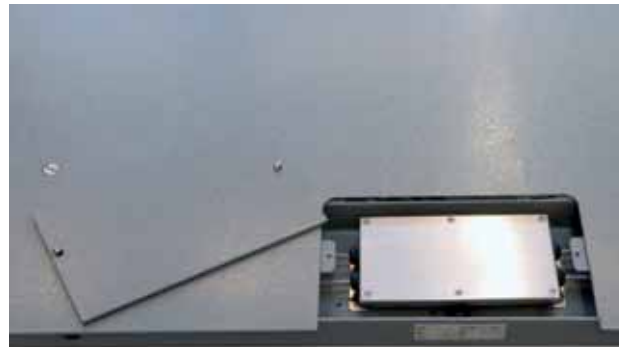
*4 load cell Platform with capacities up to 3,000 kg
Very low profile
Excellent quality/price ratio*



PRM-L weighing platform

Main features

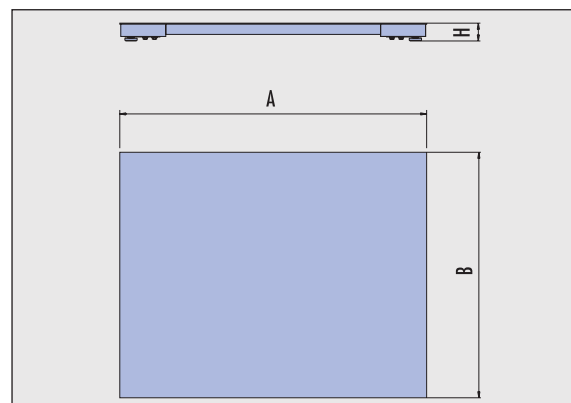
- Robust monobloc structure in painted steel
- Heavy duty weighing platform ideal for weighing lift trucks, wheeled bins and pallet trucks
- Four IP67 load cells manufactured in accordance with OIML R60 standards
- Instrument levelling can be carried out via adjustable feet, accessed from top of platform
- Can be easily integrated into production and control lines
- Easy installation and maintenance
- Shielded cable for connection to weight terminal (customised lengths on request)
- Stainless steel junction box accessible from the top
- Trade approved version or for internal use
- Can be connected to a wide range of Coop Bilanciai electronic terminals



Detail of junction box

Options

- Painted surround frame for pit mounted version
- Non-slip access ramps L=760 mm
- Multi-range version
- Calibration report for quality assurance compliance
- High-resolution version



Model PRM-L Platform dimensions A x B mm	Height H mm	Weight kg	Capacities available (kg)		
1000x1000	80		600	1500	
1200x1200	80		600	1500	
1200x1500	80		1500	2000	3000
1500x1500	80		1500	2000	3000
1200x2000	80		1500	2000	3000

Capacity	Multi-range (approved)	High resolution (non-approved) g
1500 kg	0 - 600 kg: 200 g	100 (200)*
	600 - 1500 kg: 500 g	
2000 kg	0 - 600 kg: 200 g	200 (500)*
	600 - 1500 kg: 500 g 1500 - 2000 kg: 1000 g	
3000 kg	0 - 1500 kg: 500 g	100 (200)*
	1500 - 3000 kg: 1000 g	

(...)* resolution with D70 terminal

In line with our aim of continuous product improvement, we reserve the right to make modifications at any time and without prior notice to the products as illustrated in the above photographs. - N.81190203/A - 1360 - netstudio